

SENIOR CORRESPONDENT

December, 2024

Volume 15, No.12



Board of Directors Update

HOLIDAY BAZAAR: Even though weather caused a delay of one week, this was a tremendous success. Thank you to all the ladies who worked so diligently making crafts, to those who provided baked goods and to those

who helped set up, work the day of the bazaar and helped tear down. We made over \$1,200.00.

WATERCOLOR: Aline & Tanna continue to do a great job with this popular activity.

CORE LUNCHEON: Thank you to Mike Speary and CORE for another informative presentation and for the delicious meal from Roy's Crew BBQ. The \$1,000.00 donation to the Senior Center is appreciated.

PLANETARIUM TRIP: We had 12 people go on this outing. The show about the rings of Saturn was enjoyed by all. Thank you to TSC for providing transportation.

I hope everyone had an enjoyable Thanksgiving and has recovered from eating too much turkey and fixings.

If you have suggestions for trips, please tell Debbie Martin or Mac. They work very diligently to provide trips of interest to the members.

Please record your volunteer time in the book at the front desk. This includes time you spend at home preparing for activities. Volunteer time is very useful when we apply for grants.



Thanks to all who helped make crafts to sell at the Holiday Bazaar, to those who provided baked goods, those who helped set up, work the day of the bazaar and helped tear down. We made over \$1,200.00.

Thanks again to Aline & Tanna for the wonderful Watercolor classes. The fun holiday pictures created at their November class are on the bulletin board for all to admire!

Thank you to Mike Speary and CORE for another informative presentation and for the delicious meal from Roy's Crew BBQ. The \$1,000.00 donation to the Senior Center is appreciated.

We had 12 people go on the Planetarium trip. Thank you to Teller Senior Coalition for providing transportation.



Gingerbread Cookie Make and Take Party

Friday, Dec 20 – 1:00

Join us to bake and decorate gingerbread cookies – everyone will leave with a super selection of Gingerbread cookies for celebrating with friends and family!



Woodland Park Senior Organization (aka Club) was formed July 12, 1973, to bring together seniors *age 50 and over*, in Teller and adjoining counties, to promote the well-being of senior citizens and adults with disabilities by providing social interaction, mental stimulation and healthful activities. Stop by any weekday between 9am and 1pm to check out activities we currently provide that might interest you and to suggest additional activities for our community!

Butte Theater Trip Saturday, Dec 14

10:30am - 4:30pm
Eat Lunch in Cripple Creek
Show time is 1pm



It's Christmas in Cripple Creek, and Clara, an angel treading on thin ice with her heavenly bosses, receives a last chance at redemption. Tasked with aiding Joe and Molly Kelly, proprietors of a boarding house for the downtrodden, Clara must thwart the nefarious plans of Mr. Parker, a conniving tycoon bent on seizing their beloved home. Echoing the timeless charm of *It's a Wonderful Life*, this captivating tale is a tribute to love and sacrifice set against the backdrop of the exhilarating Cripple Creek gold rush era.

Cost: non-refundable \$10 due when you reserve your spot – includes ticket for the show and bus

Registration deadline is December 10

Limited space on the bus – so sign up early

Coming in January

- 1/3 Antique Mall Trip
- 1/14 Potluck Lunch
- 1/28 Catered Meal
- 1/17 Bowling Trip

HAPPY BIRTHDAY

Marg	Sekowski	12 - 2
Patti	Metz	12 - 3
Dottie	Griffy	12 - 5
Jerry	Carson	12 - 6
Karen	Sherrill	12 - 7
Frances	Williamson	12 - 7
Ginger	Dulworth	12 - 11
Carol	Kerns	12 - 15
Tom	Kerns	12 - 15
Jack	Heiberger	12 - 16
Karolyn	Smith	12 - 16
Nancy	Remmler	12 - 18
Bill	Hostetter	12 - 21
Jayna	Rabke	12 - 21
Barb	Hauber	12 - 22
Lila	Tilger	12 - 22
Shirley	Via	12 - 23
Wendy	Beals	12 - 24
Linda	Berry	12 - 24
Greg	Donovan	12 - 24
Eunice	Weatherford	12 - 24
Mary Ellen	Zimmerman	12 - 24
Sheree	Amen-LaQuey	12 - 26
Betty	Peavler	12 - 27
Tanna	Hackney	12 - 28
Bonnie	Sulima	12 - 30
Lee	Wood	12 - 31

Dec Catered Meal is FREE for Dec Babies!

Watercolor Class

Monday, December 16
1:00 - 3:00pm

Join Aline as she guides us through the technics of watercolor painting.

All Supplies provided.

Call 719-687-3877

or sign-up at the front desk.



November Volunteer of the Month Joyce Johnson



Our Catered Meals are a favorite activity each month. This event takes quite a bit of coordination to be sure folks are informed about the menu and have the opportunity to reserve a spot for the meal.

Joyce heads up the committee that makes this happen! With her crew of dedicated callers, each member is called and the reservation information they receive is sent on to Joyce so that the list and head count can be made before each catered meal.

Thanks goes out to Joyce for keeping up this effort each month! It is dedicated folks like Joyce who contribute many hours in the background each year that keep our center a valuable location for our community.



Thursday Dec 12

11:30 am

Faith Lutheran Preschool Christmas Program
followed by fun with Santa.



FALL PHOTO CONTEST



Submit by December 17, 2024

Voting on December 19, 2024

Prizes for the Top Three Pictures.

Registration & Contest Rules
at the Front Desk.

Senior Center Christmas Celebration

Thursday, Dec 19 – 11:45am – 2:00pm

Come for the Senior Center Christmas lunch. Stay to continue the celebration with a **White Elephant** gift exchange. (Bring a wrapped gift valued no more than \$5 and join the fun of claiming and/or stealing a gift to take home.) The **Ugly Christmas Sweater**, **Fall Photo Contest** and **“Guess the number of candies in the Jar Contest”** prizes will be awarded at this event.



HOLIDAY LIGHTS TOUR

Thursday, December 19
4:15-8:30pm

Finish off your day at the **Texas Roadhouse** for dinner followed by our Christmas lights tour in Colorado Springs.

Holiday Home Tour
Sounds of the Season

Hospitality Stop

Doors are open at Woodland Park Senior Center,
321 N Pine St
for the 26th Holiday Home Tour Dec 7th & 8th.

Please stop by for refreshments and music.
Enjoy performances by Lake George Chimes of Praise,
High Altitooters, GadZUKES, WPHS Madrigals and
Ladies Ensemble, and Park Strings Ensemble.
See a complete music schedule at www.wphht.org.
Restrooms also available.

Santa & Mrs. Claus
Sunday from 11:00 until 3:00.
Great photo opportunity!



Music & Refreshments all day, both days.

NO TICKET REQUIRED



Holiday Home Tour
Sounds of the Season

 Woodland Park Senior Center
Music Schedule: Saturday

10:00 – 11:00.....Park Strings
Violins

11:00 – 12:00.....Lake George Chimes of Praise

12:30 – 1:30.....High Altitooters
Flute Ensemble

1:30 – 2:30.....GadZUKES
Ukelele Ensemble

2:30 – 3:00.....Woodland Park High School Madrigals

3:00 – 3:30.....Woodland Park Ladies Ensemble

Music Schedule: Sunday

12:00-1:00.....Park Strings
Violins

3:00-4:00.....Lara Carter
Pianist/Guitar

4:00-4:30.....Woodland Park High School Madrigals

4:30-5:00.....Woodland Park Ladies Ensemble

Bridge at the Senior Center

Join us for friendly
Bridge games
every Wednesday at 12:30.




Zumba Gold

Every Friday - 10:30 am

Are you working to improve your
overall fitness?

Join us for this
beginner level
workout .



Mahjonn



11:30am on some Tuesdays
& Wednesdays
11:30am on most Thursdays

Check the Activity Calendar
for exact dates!

Line Dancing



**Beginning line dancing
right here at the Senior Center
every Wednesday:
ten to eleven in the morning**

(Join in for physical and mental
exercise and a lot of fun!)

Our Local Food Pantries Our Need Help!

Our area food pantries need help providing shelf
stable foods to the needy in Teller County. Our Board
of Directors is asking our membership to help.

We will have a basket/box by the lunch counter for donations of shelf
stable food items. Each month we will collect food for a different partner.
Aspen Mine Center, Little Chapel in Divide, Community Cupboard,
and Community Partnership are some of the pantries in the area we
will support.



2024 December Holiday Special Club Happenings....

Wednesday, Dec 1 through Dec 19 – **Guess the number of candies in the Jar Contest** – Look for the jar of candy at the front desk. Submit your best guess of how many pieces of candy are in the jar. The person with the closest (without going over) guess will take home the jar on Dec 21.

Saturday & Sunday, Dec 7 & 8 – 10:00am to 5:00pm - The Senior Center will be a hospitality stop for the **Holiday Home Tour**. We will have treats, coffee & apple cider. The center will also be hosting live music throughout each day of the tour. Go to the December newsletter to find the music schedule.

Thursday, Dec 12 - 11:30 – **Faith Lutheran Preschool Christmas Program** followed by fun with Santa.

Saturday, Dec 14 – 10:30am – 4:30pm - Lunch & Christmas show at the **Butte Theater** “**Miracle on Mistletoe Mountain.**”

Thursday, Dec 19 – 11:45 – 2:00 - **Senior Center Christmas Celebration** – Come for the **Senior Center Christmas lunch**. Stay to continue the celebration with a **White Elephant** gift exchange. Bring a wrapped gift valued no more than \$5 and join the fun of claiming and/or stealing a gift to take home. The **Ugly Christmas Sweater**, **Fall Photo Contest** and “**Guess the number of candies in the Jar Contest**” prizes will be awarded at this event.

Thursday, Dec 19 - 4:15-8:30pm – finish off your day at the **Texas Roadhouse for dinner followed by our Christmas lights tour in Colorado Springs.**

Friday, Dec 20 – 1:00 – **Gingerbread Cookie Make and Take Party** – Join us to bake and decorate gingerbread cookies – everyone will leave with a super selection of Gingerbread cookies for celebrating with friends and family!

Note: The Senior Center will be closed on December 25 & 26 for Christmas and January 1, 2025 for New Year’s Day.



BINGO

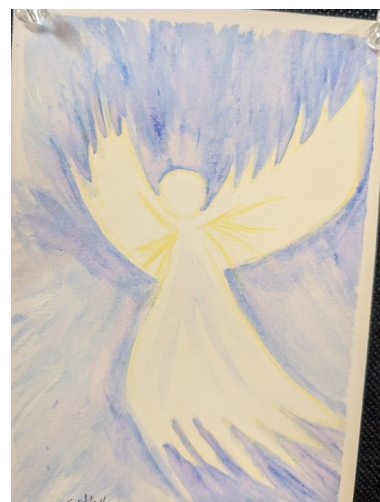
November 18 Watercolor Workshop



November 7



November 14



November 21 winners

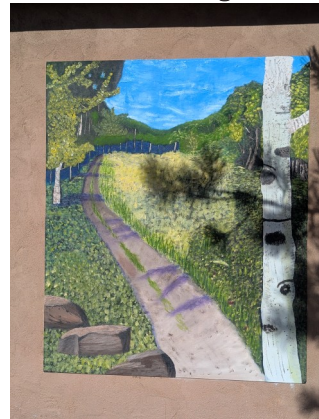


Bingo Dunce Cap Awardees

Mural in Progress



WPHS Key Club joined us for Bingo on Nov 21





WOODLAND PARK SENIOR CLUB TOP 10 MEMBERSHIP BENEFITS

1. SOCIAL ACTIVITY
2. CLUB HOUSE
3. INCREASE KNOWLEDGE
4. REGULAR ACTIVITY
5. FITNESS & WELLNESS
6. SPECIAL DISCOUNTS
7. SPECIAL EVENTS
8. NETWORKING
9. VOLUNTEERING
10. FUN, FUN, FUN



BOARD OF DIRECTORS

Jerry Burnham, President
Mac McCauley, Vice President
Sheri Coleridge, Secretary
Wally Banzhaf, Treasurer
Steve Frick, Director-at-Large
Beth Weikel, Director-at-Large
Tim Miller, Director-at-Large
Patti Metz, Director-at-Large

COMMITTEES

Operations, Jerry Burnham
Catered Lunch Coordinator, Patti Metz
Transportation, Steve Frick
Public Relations, Rose Banzhaf
Cents for Seniors, Steve Frick
Building Use, Jerry Burnham
Grants, Jerry Burnham
Historian, Karen Gilliam
Activities, Debbie Martin & Beth Weikel
Librarian, Peggy Vogt
Marketing/Advertising, Pamela Argo
Data Entry/Membership, Mac McCauley

All members are encouraged to join a committee where their interest lie. Please contact any of the board members with any concerns or suggestions.

2024 SUPPORTING MEMBERS

Any individual, business, or organization helping to support the Senior Club with a cash donation or a gift in kind

SPONSOR - \$1,000 & UP

City of Woodland Park
George Caley
CORE
Cruise Above the Clouds
El Pomar Foundation
ENT Credit Union
Mountain View Independent Living
Newmont Mining
Next 50 Initiative
Jim O'Neal
Osborne Trust
Andrew & Janice Parmes
John & Cynthia Robinson
Tweeds Holiday Home Tour
VFW POST 11411
Woodland Park Convention & Visitors Bureau

BENEFACTOR - \$350 to \$999

Wally & Rose Banzhaf
Jerry Burnham
Barbara Riley-Cunningham
City Market/Kroger
Doug & Karen Gilliam
Grandmother's Kitchen
HD Aero Engineering
Lynne Johnson
Ric & Eva Mattedi
Mountain View United Methodist Church
Park State Bank
Cheryl Price
Angela Wallace U.S.Charitable Gift Trust

PATRON - \$200 to \$349

Sheree Amen-Laquey - Terry & Carole Amerine
Katherine Bergin - Sally Byrd - Holiday Home Tour
Dale & Linda Peterson - Brooke & Karolyn Smith
Devani Unbewust - Gene & Ruth Williams
Wickham's Workbench - Francis Young

FRIEND - \$50 to \$199

Bob Accinni - Greg & Brenda Alberts - Gina Billingiere
Benchmark Mortgage - Irene Berryman - Arvid Burnham
Jerry Carson - Linn Churchill - Joan Clecker - Lloyd & Helen Collins
Charles & Hildred Davis - Marilyn DeCaro - Jeffery & Judy Dunn
Suzanne Ferond - Gene & Sheryl Flemmings - Karen Fry
Tom & Carol Gould - Paul & Janice Hamlet - Kathy Hastings
David & Kathy Hogeboom - Home Town Garage
Bill & Martha Hostetter - Freeman & Emily Howard
Joyce & Irving Johnson - Sherry Johnson - Judd's Glass & Mirrors
Liz Kusterie - Sharon Loewen - Mark & Jim Mackel - Debbie Martin
Adrienne Mauser - Mac McCauley - Ernest & Sharon Moser
Agneta & Fred Nachtigal - Jerry Paul - Ken & Desiree Perkins
Pat & Julia Pine - Eleanore Piwoni - Buz & Debbie Porter
Judith Ann Rayer - Sally & Mel Riley - Safeway - Linda Shepard
Gary Smith - Shirley Via - Dave & Beth Weikel - Melanie Wilcox
Theresa Williams - Ed & Jeanette Zupancic

DONOR - \$1 to \$49

Jeanne & Coleman Barron - Joanne Carnahan - Marilyn Cummins
Carrie Douglas - Excel Energy - Ron & Susan Frindt
Tanna Hackney - Anna May Hoffman - Davis & Kathy Hogemoon
Jeanette Holley - Freeman & Emily Howard - Cliff Jones
Dianne Melin - Leslie McNutt - Sharon Pletcher - Vickie Rector